

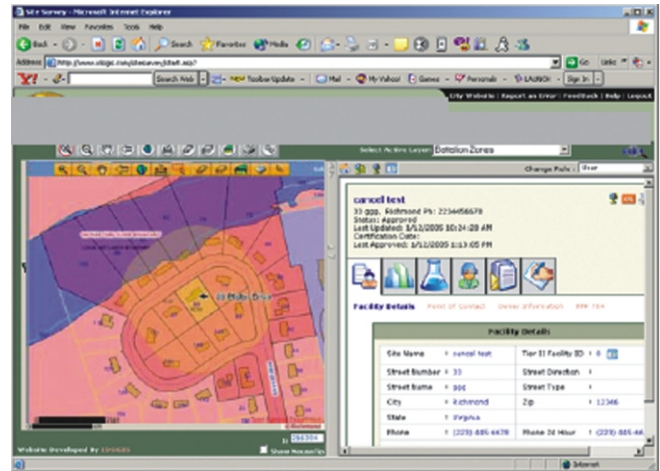
## SiteCheck™

For Fire and Emergency Responders

IDSi International has developed an end-to-end, web-based application to help the fire administration and emergency response personnel capture and maintain detailed critical infrastructure information for pre-planning. Rapid understanding about structures is essential from a preparedness and response perspective. SiteCheck™ enables easy, comprehensive data collection, analysis, and critical access to updated site information at the time of an incident.

SiteCheck™ captures important site information such as site location, building information, alarms, escapes, access routes, emergency response information, and detailed fire protection instructions. The submission module is equipped with look-up menus to make detailed surveys completion easier. All submitted information can be reviewed for accuracy by appropriate battalion chiefs and approved before being submitted into the common response database. Integrated with the DOT Emergency Response Guidebook (ERG), the system provides real-time access to emergency response procedures and chemical composition information. The GIS-enabled system allows users to quickly map the location of the site and view surrounding vulnerabilities. The critical information can be accessed wireless while deploying toward an incident.

## Pre - Planning around Critical Infrastructure



**Site Infrastructure, Maps, and Guides are seamlessly integrated for rapid assessments.**

### FEATURES

- SiteCheck™ is an end-to-end, web-based solution.
- Integrated with the DOT Emergency Response Guidebook.
- GIS functionality provides vital spatial information about sites and their relationship to critical infrastructure and demographics.
- Provides County and State authorities with customized Searches and other functionality designed to successfully complete planning and oversight tasks.
- Search a database of over one million MSDS and retrieve MSDS data in seconds.
- Works on various back-end database platforms.
- For First Responders, the application can be deployed wirelessly or a standalone version covers non-coverage areas.
- Multiple levels of security ensure appropriate access to data and functionality depending on the user's role.

### MODULES

**Online Submission** – Fire inspectors and planning personnel can submit detailed building, response, special needs, and chemical information collected from each site.

**Review** – All reports can be reviewed by appropriate Battalion Chiefs/Emergency Planners previous to submission in the common Emergency Planning database.

**Emergency Planning** – Firefighters and other responders can rapidly access critical information about thousands of sites including links to various support guides wirelessly while deploying toward a site.

**GIS Mapping**– All sites can be rapidly mapped for spatially analysis, proximity to risk institutions, and other emergency response resources.

**Administration** – Gather detailed reports to monitor all users, activities, and events in the system. Easily configure the system to provide updated choices for fire and critical infrastructure site surveys.