



## WebParcel™ .NET With ArcGIS Server

The WebParcel™ is a web-based application designed to easily publish Parcel Information and the associated Tax Assessor's Database using a user-friendly interface. This product can be rapidly implemented in a Local Government intranet/ internet infrastructure.

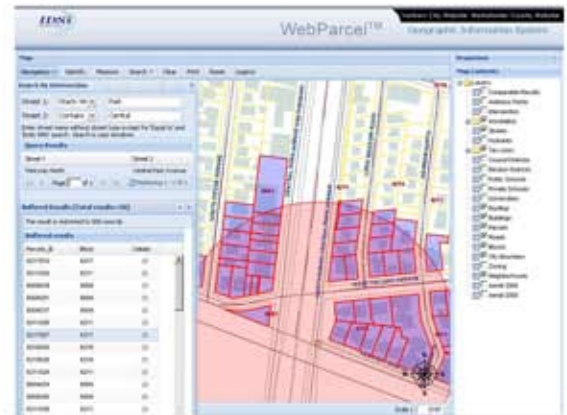
This product is an important tool for a local government agency moving towards complete task automation, e-Governance and strengthening relations with the community by reaching out to citizens with updated information and proactive planning tools. The WebParcel™ can be customized to implement different security levels and functionalities specific to various departments such as Public Works, Planning, and Emergency Response and can be integrated with third party systems



**Search and locate a parcel and view the associated tax assessor's database in a single view**

## FEATURES

- Web Parcel™ is an end-to-end, web-based solution.
- Create a buffer of user-defined distance around a selected parcel and generate/print mailing labels.
- Search by Owner Name, Street Address, Parcel ID or section/block and lot.
- Search Results displayed as a sorted list.
- Zoom to a selected property with a single click.
- Generate or Print Property Records and Appraisal Cards.
- View tax assessor database details of any selected property.
- Display photographs of any selected property.
- Interactive Selection of multiple parcels.
- Easily print Maps of selected properties.



**Several features can be customized to provide security authorization and task automation**

*Note: **IDSi International** provides ArcIMS hosting services. The hosting package includes 24X7 access, customized solutions, database integration, maintenance, and support. This option is recommended for clients who do not have the required hardware/software infrastructure or system administrators experienced in web server and ArcIMS technologies.*